

Name:

Section:

Date:

Teacher:

IDENTIFY SENTENCES

A sentence is a group of words arranged in proper order. It is the largest grammatical unit. Every sentence must be meaningful and express complete thought. We find a subject and a predicate with verb in a sentence with complete sense. A sentence begins with a capital letter and ends with a period (.) / Question mark (?) / Exclamation mark (!).

Read the following and tick () the meaningful sentences.

Examples:

a) On the table. ()



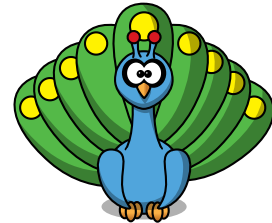
b) My toy is on the table. ()

1. a) Please.....book.....please. ()



b) Would you please lend me your book? ()

2. a) How peacock beautiful. ()



b) How beautiful the peacock is! ()

3. a) Don't noise. ()



b) Don't make noise. ()

4. a) You should know how to behave. ()



b) How to behave. ()

Name:

Section:

Date:

Teacher:

IDENTIFY SENTENCES

A sentence is a group of words arranged in proper order. It is the largest grammatical unit. Every sentence must be meaningful and express complete thought. We find a subject and a predicate with verb in a sentence with complete sense. A sentence begins with a capital letter and ends with a period (.) / Question mark (?) / Exclamation mark (!).

Read the following and tick () the meaningful sentences.

1. a) To go home. ()

b) I am ready to go home. ()



2. a) We play games every evening. ()

b) Every evening games play. ()



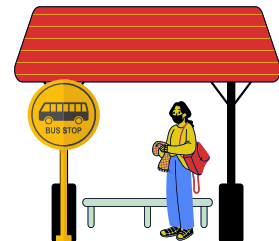
3. a) We have a lovely orange tree. ()

b) Lovely orange tree. ()



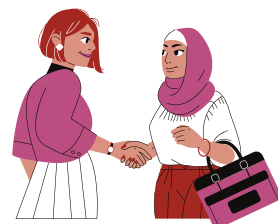
4. a) At the bus stop. ()

b) Rani waited at the bus stop. ()



5. a) What is your name? ()

b) What name yours? ()



Name:

Section:

Date:

Teacher:

IDENTIFY SENTENCES

A sentence is a group of words arranged in proper order. It is the largest grammatical unit. Every sentence must be meaningful and express complete thought. We find a subject and a predicate with verb in a sentence with complete sense. A sentence begins with a capital letter and ends with a period (.) / Question mark (?) / Exclamation mark (!).

Read the following and tick () the meaningful sentences.

1. a) Climb the hill. ()

b) Jennie can climb the hill. ()



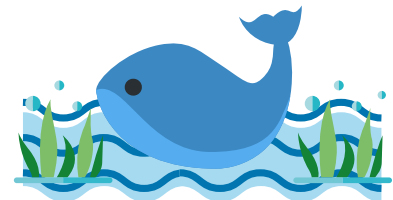
2. a) School started. ()

b) Our school started at 9 A.M. ()



3. a) Blue whales live in the sea. ()

b) Live is sea. ()



4. a) Jessica how lucky. ()

b) How lucky Jessica is? ()



5. a) If you work hard, you will pass the test. ()

b) If you hard work. ()

